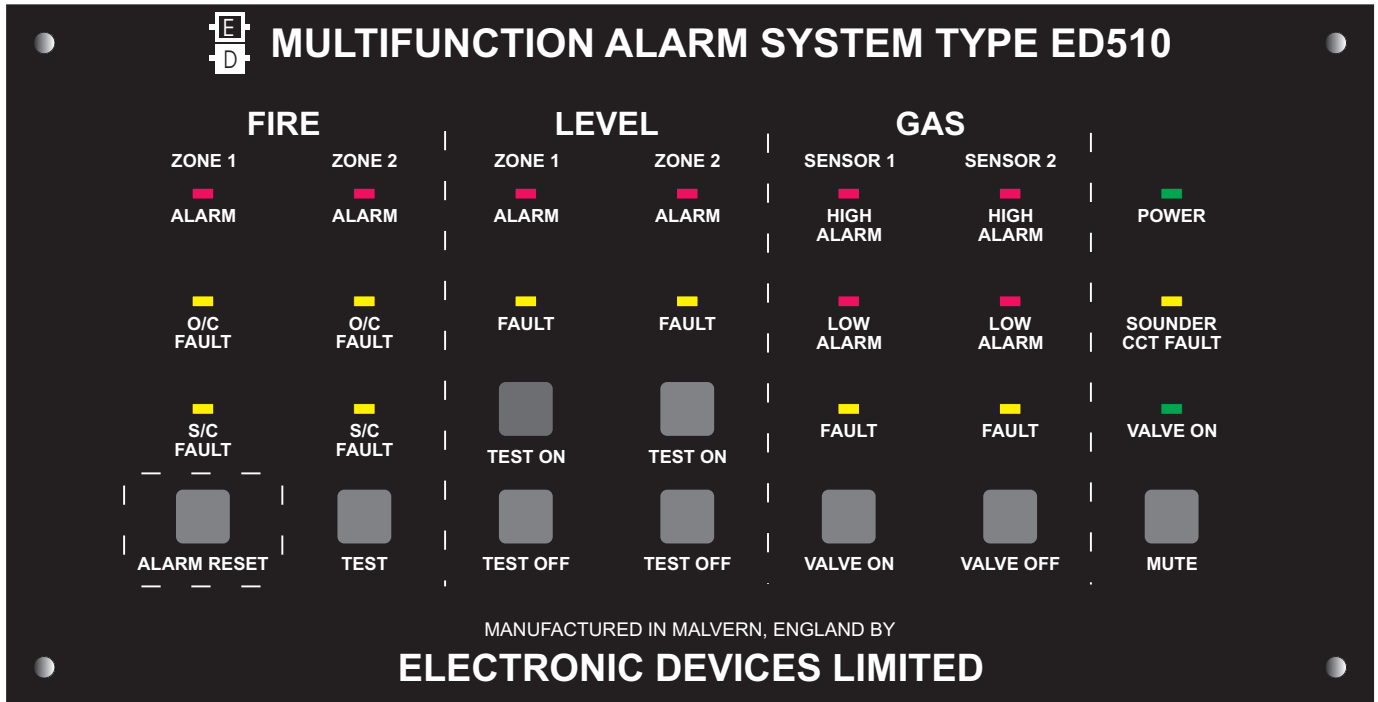


*ADVANCE INFORMATION*

*SUITABLE FOR PLEASURE AND SMALL WORK BOATS*



AT LAST -

THE PROFESSIONAL ANSWER TO A SMALL BOATS FUNDAMENTAL PROBLEMS  
GAS, FIRE & WATER DETECTION IN ONE.

Go to sleep at night knowing you will be instantly alerted to the three main problems every boat owner dreads. With Fault monitoring and low current consumption as standard. Mounted in a tactile, waterproof front panel plus -

2 FIRE ZONES

For example:

- One Engine room zone
- One accomodation zone - protect the galley and sleeping quarters.

2 BILGE LEVEL ZONES

More than two detectors if necessary. Will drive two pumps independently.  
Anti-slop operation as standard.

2 GAS DETECTORS

One under the cooker.  
One protecting pipework / valve / bottle.  
Switch off the gas automatically via our low consumption valve.  
Double level alarms as standard give greater warning and reliability.

All "new" detectors operating in an alarm condition will re-trigger the sounders.

We have equipped many Oil Rigs, Tankers, Fishing boats and Refrigeration Plants all over the world - take advantage of our expertise.

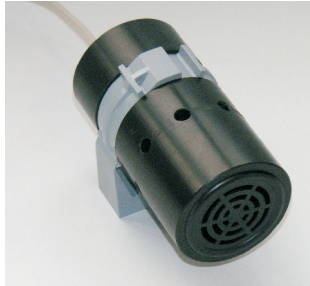
Over 30 years in the professional market means that you have the benefit of professional equipment with, as standard, Lloyds Register of Shipping & MCA approved fire and bilge sensors and BASEEFA 2001 certified gas detection if required.

## FIRE DETECTION

In conjunction with Apollo Fire Detectors Limited we provide marine approved fire detection heads at low cost in two distinct zones capable of protecting all vulnerable areas of a boat. Heat and optical smoke detection may be mixed as required with the integrity of each line constantly monitored. Two independent supplies, as required by fire detection authorities, can be provided if necessary.



## BILGE LEVEL DETECTION



Bilge level water detection is provided by our own bilge water switches which hold Lloyds Register of Shipping, MCA and ATEX (where necessary) approval. They have facilities for instant removal and checking. With cases turned from solid Nylon they last for many years in a dormant condition and will still operate on that once in a lifetime demand. An "on" and "run-on" delay adjust prevent unwanted alarms due to small amounts of water in the bilge.

## GAS DETECTION

Operating double level alarms, the gas turns off automatically at 25% LEL (Lower Explosive Limit) and the alarm is re-triggered at 50% LEL Propane, Butane etc.. The ED510 gives peace of mind while the ability to turn off the low consumption gas valve from inside the boat means safety without getting cold and wet! We suggest one sensor at low level in the galley, where it will sense leaks or drips from cooker and or water heater, while the other should protect the gas line / junctions etc. inside the boat.

The ED510 can also drive Catalytic or Electrochemical type sensors. These are more precise detectors which will detect only flammable gas or very low level (a few ppm) toxic gases such as the extremely dangerous Carbon monoxide.



## SOUNDERS & BEACONS -

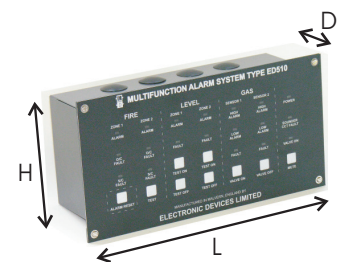


ED6

A range of low consumption marine approved sounders and beacons are available.

CONSUMPTION - Standby approx. 140mA.  
Valve on 12V -210mA, 24V - 195mA

DIMENSIONS - 250 L x 150 H x 80 D (behind front panel) mm.  
(Control unit only)



**ELECTRONIC DEVICES LIMITED**

ENIGMA HOUSE, ENIGMA BUSINESS PARK, MALVERN, WORCESTERSHIRE WR14 1GD ENGLAND.

TELEPHONE : +44 (0) 1684 891500 FACSIMILE: +44 (0) 1684 891600

EMAIL: sales@electronicdevice.demon.co.uk WEB SITE: www.electronicdevice.demon.co.uk